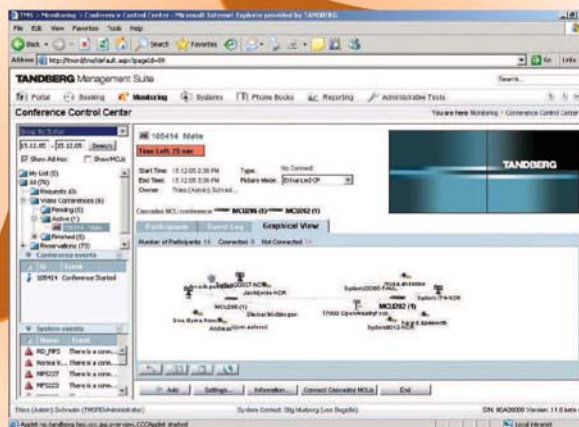




Sistema di Gestione



Diagnostica, Monitoraggio & Reportistica



Collaborazione



Programmazione

TANDBERG Management Suite

Un'unica piattaforma gestionale per tutte le tue esigenze di videocomunicazione. TANDBERG Management Suite (TMS) è uno strumento scalabile e facile da utilizzare che si integra perfettamente con le applicazioni esistenti migliorando il ROI. TMS da inoltre completa visibilità e controllo su sistemi video on-site e remoti.

TANDBERG Management Server:

TANDBERG Management Server è una soluzione opzionale chiavi in mano facile da implementare per la gestione di piccole e medie installazioni video.



PROGRAMMAZIONE

- Conferenze video, audio, dati e sul web programmate o ad-hoc
- Abilità di pianificare conferenze, prenotare sale riunioni e invitare i partecipanti utilizzando IBM Microsoft Outlook® o IBM Lotus Notes® *

COLLABORAZIONE

- Supporta Microsoft® Office Communicator*
- Supporta IBM Lotus Same-time® Connect*

* requires software option

GESTIONE

- Gestione di sistemi video in sede e remoti, incluse statistiche, rubriche, prenotazione updates software
- Interfaccia utente intuitive basata sul web
- Supporto per la gestione di sistemi video e di rete di diversi fornitori
- Gestione dei collegamenti effettuati su protocolli multipli (IP su H.323 e SIP, ISDN, V.35 e misti)
- Gestione diretta di endpoints, MCUs, gatekeepers e gateways
- Supporto per servers multipli per il miglioramento del tempo di operatività
- Supporto per la creazione automatica di rubriche telefoniche, inclusi Active Directory e H.350

MONITORAGGIO/REPORTISTICA

- Detailed system-by-system and conference-by-conference records
- Intelligent diagnostics for rapid support response
- System Summary Page for fast access to mostused information
- Consolidated list of open tickets with links to recommended fixes
- Integrated Network Monitoring Support - Integrates with HP OpenView, IBM Tivoli®, NetCool® and any SNMP network monitoring tool

TUTELATE IL VOSTRO INVESTIMENTO TECNOLOGICO. CON I SERVIZI PROFESSIONALI TANDBERG SUPPORTO DALL'INSTALLAZIONE AI TRAINING. VISITATE IL SITO WWW.TANDBERG.NET

GESTIONE

CENTRO DI CONTROLLO DELLE CONFERENZE

Complete conference overview on one screen
Conference and participant connection control
Conference-by-conference and system-by-system information

AGGIORNAMENTO SISTEMA

Pre-scheduled or ad-hoc software updates
Release key import and export

CONTROLLO DEI SISTEMI

Phonebook access
Monitoring and reporting
Software upgrades
Initiate, extend and terminate conferences
Change video layouts
Volume control and audio mute/unmute
Microphone on/off
Edit local phone books
Send messages to systems
Detect illegal system configurations

CONTROLLO DEI SISTEMI REMOTI

Phone book access
Software Upgrades
Statistics

LINGUE

English, Simplified Chinese and Japanese
Supports over 15 languages for booking and scheduling

DIAGNOSTICA INTELLIGENTE

Automated ticket handling (open/close)
Ticket priority customization
Proactive system check-up prior to engaging scheduled meetings
Intelligent Trouble Ticketing Handling
Diagnostic messages and status suggestions
System status, gatekeeper solution, SNMP configuration, ISDN/IP configuration and information

SUPPORTO PER IL MONITORAGGIO NETWORK INTEGRATO

Integrates with HP OpenView, IBM Tivoli®, NetCool® and any SNMP network monitoring tool

SERVIZI DI RUBRICA

Corporate Directory allows multiple phone books and folders, browsing and searching from the endpoint
Supports server based TANDBERG, Polycom phone books, and H.350 white pages
Centrally-managed server phone books
Creation of one or multiple phone books
Search unlimited entries
Automatic directory import from gatekeeper, ILS and LDAP (single or multiple source)
Supports over 10 methods of automatic creation of phone books, including Active Directory and H.350
Create, edit, import and export phone books
Automatic application of national and international dialing rules
Automatic identification of ISDN/IP numbers
Automatic insertion of gateway (GW) prefix, area codes and country codes

GESTIONE ACCOUNT, SICUREZZA E PERMESSI

FTP audit log from TANDBERG endpoints and MCUs
Flexibility to limit access to TMS features and limit access to endpoints
Definition and management of user profiles
Multiple security permissions
Single sign-on authentication of users using Windows® authentication

MODELLI/FORNITURA

Customized template creation, management and distribution to systems
Selectable audio, video, network and bandwidth settings
Mass Deployment with automatic configuration from TMS
Ability to create persistent setting templates that can be proactively enforced on systems

BACKUP

Capability to perform daily configuration restores, ensuring systems begin the day with the proper configuration
Backup system settings
Restore lost settings

MONITORAGGIO

MONITORAGGIO DI MAPPATURA

Map monitor with graphic display
Customizable background images
Graphical display of call and system status

NOTIFICA DEGLI EVENTI

Event Notification can be integrated into any SNMP Network Management system (e.g., HP Openview and IBM Tivoli)
E-mail notification to individuals or groups
Event logging including boot, link down/up, connect error, call connected/ disconnected, lost response/got response, Downspeeding, upgrade start/finish scheduling, gatekeeper registration, low battery, wrong password alert

DATI DI FATTURAZIONE

Flexibility to use billing and account codes
Full Call Detail Records including Billing or Account codes for cost analysis or accounting

REGISTRI DEI DETTAGLI DELLE CHIAMATE (CDR) E RELATIVE STATISTICHE

Supports CDR capturing from Endpoints, MCUs, Gatekeepers and Gateways
Call detail records on screen or in native Excel format
Graphical display of call detail data
Support for multiple reporting formats: Onscreen, PDF or HTML
Number of incoming and outgoing calls
ROI Calculator
Call date and duration
Bandwidth usage
Network type
Number/address called
Statistics in data, graph and chart format
Number of scheduled conferences per person
Network, gatekeeper and ISDN inter face
Authentication failure
Error statistics
Battery status

INSTRADAMENTO DELLE CHIAMATE

Ability to support Best Impression Cascading and Least Cost Cascading
Automatic call routing on IP and ISDN
Least cost call routing on IP and ISDN
Automatic MCU, gateway and network selection
Supports MCU cascading, V.35, SIP, H.323, and H.320

PIANIFICAZIONE E PRENOTAZIONI*

PRENOTAZIONE DEI SISTEMI

Book system and meeting room simultaneously
Book recurring meetings and video resources
Create, password protect, edit or delete booked conferences
Add web or data conference to meetings
Add/remove participants from reservation or connect/disconnect participants during conferences
Connect conferences ad-hoc or pre-schedule connection
Reserve resources for dial-in participants (telephone or video on ISDN or IP v.4 or IP v.6)
Schedule point-to-point conferences or bridged meetings
Lock conference, preventing new participants from joining
Invite participants by e-mail
Customize meeting names

OVERVIEW DELLE PRENOTAZIONI

Overview of scheduled meetings, resources and participants
Real-time over view of meeting status

CONFERENZE DATI E SU WEB

Integrated scheduling of WebEx conferences with video system booking
Create a data conference for participants to share applications and edit documents (Supports WebEx, Microsoft Live Meeting and TANDBERG See & Share)
An e-mail invitation is generated, enabling conference participants to link to the Web conference

INTEGRAZIONE CON MICROSOFT EXCHANGE SERVER

Ability to schedule conferences, book rooms and invite participants using Microsoft Outlook
Requires Microsoft Exchange Server 2000 or 2003
OFFICE COMMUNICATOR
Ability to launch ad-hoc and multipoint calls via Office Communicator
Requires Microsoft Live Communications Server 2005

INTEGRAZIONE CON IBM LOTUS DOMINO® SERVER

Ability to schedule conferences, book rooms and invite participants using IBM Lotus Notes and Lotus Sametime
Requires IBM Lotus Domino Server V6.x running on Microsoft Windows®

SUPPORTO RIDONDANZA

Application Redundancy
Database Clustering

REQUISITI

TMS SERVER (REQUISITI MINIMI)

1 GB RAM
Pentium 2 Ghz or higher Pentium compatible CPU
Microsoft Windows 2000 or 2003 Server running the latest Service Packs with Internet Information Services

REQUISITI TMS CLIENT

Internet Explorer 5.5 and above or Firefox browser

1.5 or higher

REQUISITI SEE&SHARE SERVER

(SE È INSTALLATA L'OPZIONE SEE&SHARE)

Pentium I 500 Mhz
Microsoft Windows 2000, 2003 or XP operating system

256 MB RAM

20 MB of available disk space for services

REQUISITI SEE&SHARE CLIENT

Internet Explorer 5.5 or higher

OPZIONI SOFTWARE

Microsoft Office Communicator Package
Microsoft Exchange Package
IBM Lotus Sametime Package
IBM Lotus Domino Package
3rd party booking API for customized integration
Network Integration Package (supports Cisco® IP/VC 3540, Polycom® MGC (Accord) MCU, RADVISION vialP MCU and others)

* TMS include TANDBERG Scheduler.

Tutte le caratteristiche sono soggette a modifiche senza preavviso.

Tutte le immagini contenute all'interno del presente materiale sono da considerarsi esclusivamente a scopo illustrativo.

TANDBERG è un marchio registrato o un marchio di TANDBERG registrato negli Stati Uniti o in altri paesi.

Tutti gli altri marchi commerciali sono di proprietà dei rispettivi titolari.

PROCESSORE & MEMORIA

Intel® Pentium® 4 LGA775 CPU (Max. Intel® Pentium® 4 LGA775 CPU (Max. 3.6GHz with 800MHz FSB and 1MB Cache)
240-pin DIMM x 2, support Max. 2GB DRR11 400/533 memory

BIOS

Award System BIOS
Support Console redirection
Support Power on after power fail as the BIOS option
By-pass enable/disable as the BIOS option

ESTENSIONE PCI

On-board 32bit/33MHz Mini PCI Socket x1 (Master)

MEMORIA

IDE 3.5" HDD x 1 (Stand Type) or IDE 3.5" HDD x 2 (Slim Type)
SATA 3.5" HDD x1 (Stand Type) or SATA 3.5" HDD x2 (Slim Type)
On-board Compact Flash Socket (Primary Channel)

RAFFREDDAMENTO DEL SISTEMA

On-board 40 x 40 mm fan x 2
System 40 x 40 mm fan x 2 at Rear

ETHERNET

Marvell 8053 x 4 (PCI Express x 1); & #28; Copper (Base T, RJ45 with LED) GbE port x 4 (1, 2, 3, 4) & #28; LAN 1 & 2 support by-pass function

CONTROLLO E INDICATORI DI SISTEMA

Power LED x 1 at Front
HDD Active LED x 1 at Front
AT Power Switch x 1 at Rear

INTERFACCIA DI SISTEMA I/O

COM port x 2 (Front x 1, Rear x 1)
USB 2.0 port x 4 (Front x 2, Rear x 2)
GPIO : 4 in 4 out
Optional 16 x 2 characters LCD Module with keypads through PIO Interface

DATI AMBIENTALI

Operating temperature:
0°C to 40°C (32°F to 104°F)
Relative humidity: 10% to 90%
Storage and space in transport temperature:
-20°C to 80°C (-4°F to 140°F) non-condensing

ALIMENTAZIONE

100-240VAC, 50-60Hz, 250W max

DIMENSIONI

Height: 1.7" (44mm)
Width: 16.8" (426mm)
Depth: 16.4" (419mm)
19" rack-mountable,
1U height



TANDBERG

Management Suite

TANDBERG DIREZIONE MONDIALE
Philip Pedersens vei 20
1366 Lysaker, Norway

200 Park Avenue, Suite 2005
New York, NY U.S.A. 10166

TANDBERG Italia
Via Giovanni Falcone 9
I-20094 Corsico MI
Tel.: +39 02 89631901
Fax.: +39 02 89631910
Video: +39 02 89631965
Email: italy@tandberg.net

Luglio 2006